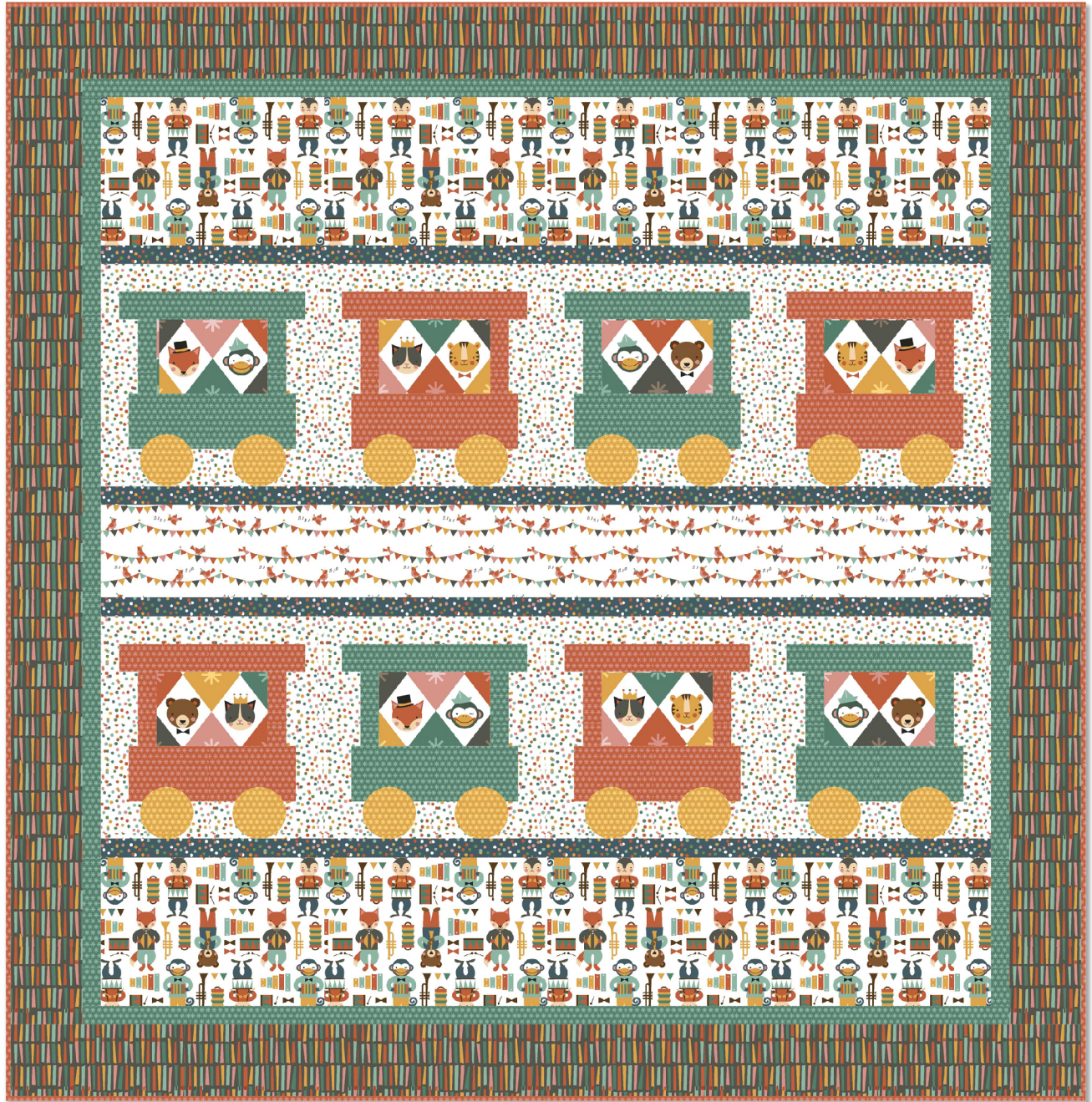


# The Party Train

Designed by Bethany Fuller  
Featuring Petit Collage's Party Animals Collection

SIZE: 58" x 59"



**PLEASE NOTE:** QUILT IMAGE SHOWN IS A DIGITAL REPRESENTATION, FABRIC LOOK MAY VARY ON YOUR PROJECT.  
VISIT OUR *FREE PROJECT* SECTION ONLINE FOR ANY PATTERN UPDATES BEFORE STARTING QUILT PROJECT.



WINDHAM FABRICS

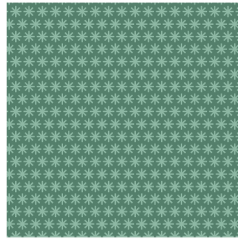


# The Party Train

Page 2



41507-X Multi



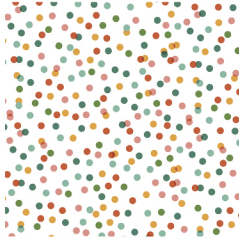
41513-1 Green



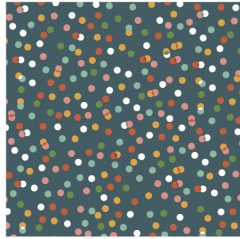
41508-2 White



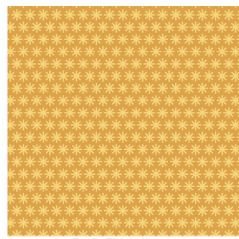
41509-X Multi



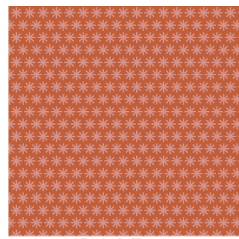
41510-2 White



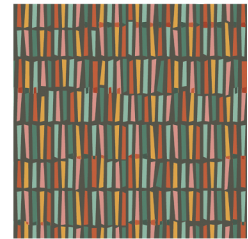
41510-3 Teal



41513-7 Yellow



41513-8 Red



41511-4 Charcoal

SKU / COLOR	YDS
41507-X	1/2 yd
41508-2	7/8 yd
41509-X	1/3 yd
41510-3	1/4 yd
41510-2	3/4 yd
41513-1	7/12 yd

SKU / COLOR	YDS
41513-7	1/4 yd
41513-8	3/4 yd
41511-4	7/8 yd
Backing	3 2/3 yd
Double-sided Fusible Web	1/8 yd

## Cutting Instructions

From the focus fabric (41507-X) fussy cut 8 – 4 ½” x 8 ½” rectangles for train blocks

From the all-over print (41508-2) cut 3 – 8 ½” strips

From the banner print (41509-X) cut 2 – 5 ½” strips

From the dark dot (41510-3) cut 5 – 1 ½” strips

From the light dot (41510-2) cut:

1 – 12 ½” strip

Cut into 8 – 2” x 12 ½” rectangles & 8 – 2 ½” x 12 ½” rectangles

2 – 2 ½” strips

Cut into 16 – 2 ½” x 4 ½” rectangles

2 – 2” strips

Cut into 16 – 2” x 3 ½” rectangles

1 – 1 ½” strip

Cut into 16 – 1 ½” x 2” rectangles

# The Party Train

## Page 3

From EACH the two train car colors (41513-1 & 8) cut:

1 – 2” strip

Cut into 4 – 2” x 10 ½” rectangles

1 – 1 ½” strip

Cut into 8 – 1 ½” x 4 ½” rectangles

1 – 3 ½” strip

Cut into 4 – 3 ½” x 9 ½” rectangles

From the remaining color (41513-7) make 16 wheels. Trace the circle template onto the paper side of the fusible web. Iron onto wrong side of the fabric. Cut out circles on the line. Set aside to be fused and stitched after the blocks are pieced.

From the inner border fabric (41513-1) cut 6 – 1 ½” strips

From the outer border fabric (41511-4) cut 6 – 4 ½” strips

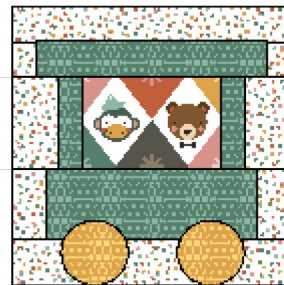
From the binding fabric (41513-8) cut 7 – 2 ¼” strips

### Piecing Instructions

Piece your blocks into three sections as marked here. Complete the blocks, then machine applique the wheels to the train car. Make sure to leave enough space below the wheels for a ¼” seam allowance.

Make 4 blocks of each color.

Piece blocks together into 2 rows of 4 blocks each.



Piece the 8 ½” all-over print strips into 1 long strip. Cut into 2 – 48 ½” strips

Piece the 5 ½” banner strips into 1 long strip. Cut into 1 – 48 ½” strip

Construct the quilt center by sewing your rows together according to the cover photo.

Piece the 1 ½” inner border strips together into one long strip.

Measure your quilt center from top to bottom. Cut 2 strips to this length. Pin well and sew to quilt. Measure across the quilt center and cut 2 strips to this length. Sew to top and bottom of quilt.

Repeat this process for the outer borders.

Quilt as desired and bind.